

INCORPORATING  
PRODUCTS AWARDED  
THE QUEENS AWARD  
FOR ENTERPRISE:  
INNOVATION  
2004 & 2006



THE QUEEN'S AWARDS  
FOR ENTERPRISE:  
INNOVATION  
2004 & 2006



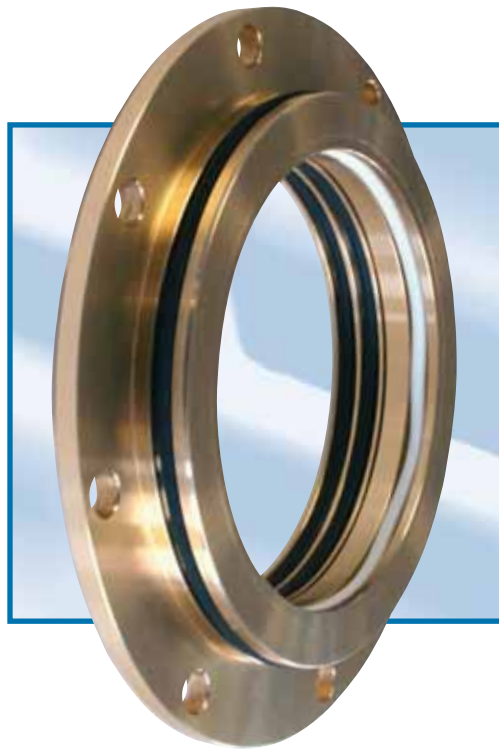
ENVIRONMENTAL TECHNOLOGY

reliability-focused-solutions.com

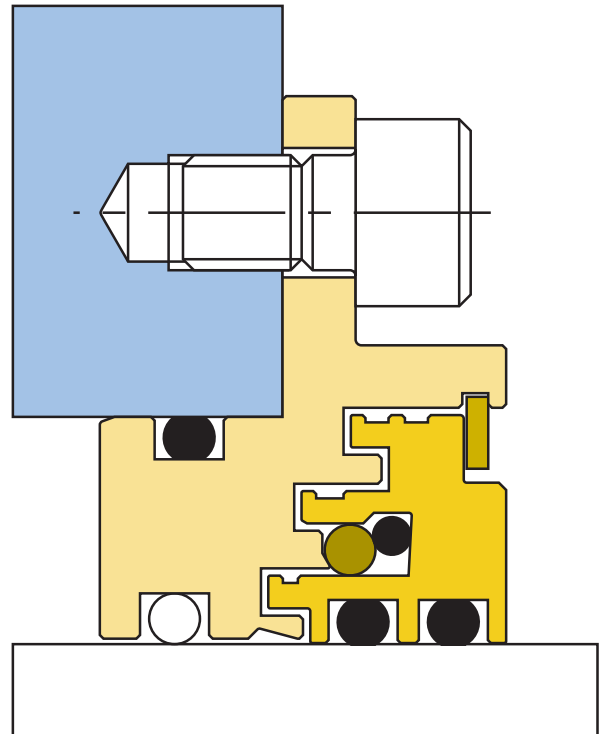
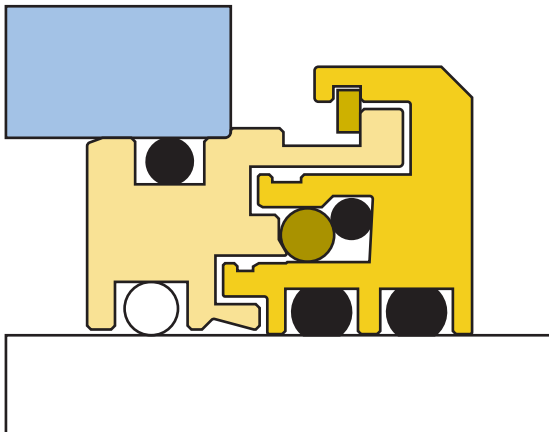
Reliability  
Focused  
Solutions



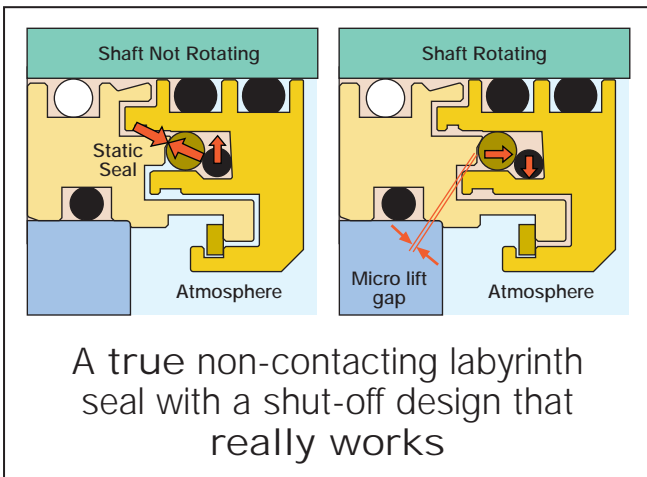
## Bearing Protection to suit Warman® Pumps



Engineered to suit Warman® pumps



- Advanced labyrinth seal design
- Flange mounted and press fit designs available
- PTFE grease inhibitor band for superior egress protection
- Robust heavy duty design
- Shut-off valve to prevent bearing chamber breathing
- Proven to increase equipment reliability
- Full range of end covers and stub shafts also available



LabTecta™ integral moisture entry protection system.



LabTecta™ installed on equipment

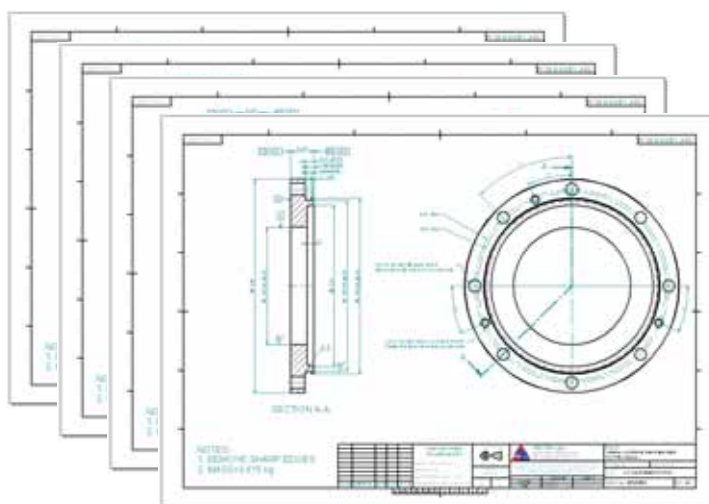
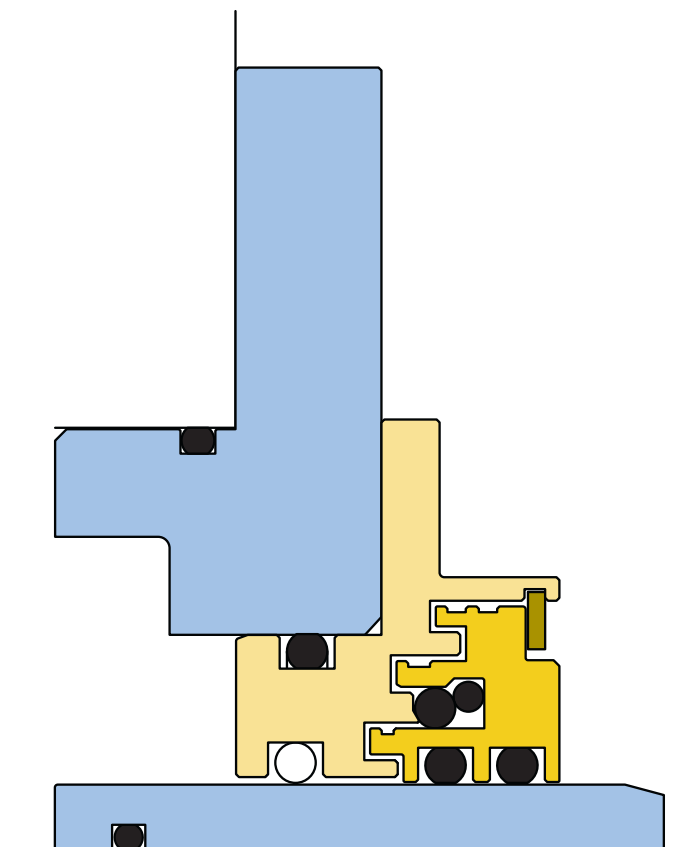


End Cover



Spacer Sleeve

- Full range of end covers and stub shafts available
- Manufactured components or drawing pack can be supplied
- Adjustment screws for easy bearing setting
- Effective 'O' ring Seal
- Robust heavy duty design
- Proven to increase equipment reliability
- For drawing pack order ref: L-WAR-DWG



Full drawing pack contains all drawings to enable stub shafts and end covers to be manufactured locally, offering the customer maximum flexibility and value

# Bearing Protection to suit Warman® pumps



Bearing Assembly	End	Plate Assy Stock Code	Stub Assy Stock Code	Plate/Stub Stock Code	Shaft size (mm)	Hous bore (mm)	LabTecta™ Stock Code
B005M	BOTH	L1-070-02B---WAR/01A	L1-050-01B---WAR/01A	L1-WAR01-B---01	50.0	70.0	LAM050PP001WARPM070
C005M	BOTH	L1-086-02C---WAR/01A	L1-060-01C---WAR/01A	L1-WAR02-C---01	60.0	86.0	LAM060PP001WARPM086
CC005M	PUMP	L1-086-02CC--WAR/01A	L1-060-01CC--WAR/01A	L1-WAR03-CC--01	60.0	86.0	LAM060PP001WARPM086
	DRIVE	L1-086-02CCD-WAR/01A	L1-060-01CCD-WAR/01A	L1-WAR04-CCD-01	60.0	86.0	LAM060PP001WARPM086
CAM005M	BOTH	L1-086-02C---WAR/01A	L1-060-01C---WAR/01A	L1-WAR02-C---01	60.0	86.0	LAM060PP001WARPM086
CCAM005M	PUMP	L1-086-02CC--WAR/01A	L1-060-01CC--WAR/01A	L1-WAR03-CC--01	60.0	86.0	LAM060PP001WARPM086
	DRIVE	L1-086-02CCD-WAR/01A	L1-060-01CCD-WAR/01A	L1-WAR04-CCD-01	60.0	86.0	LAM060PP001WARPM086
D005M	BOTH	L1-111-02D---WAR/01A	L1-085-01D---WAR/01A	L1-WAR05-D---01	85.0	111.0	LAM085PP001WARFM111
DD005M	PUMP	L1-111-02DD--WAR/01A	L1-085-01DD--WAR/01A	L1-WAR06-DD--01	85.0	111.0	LAM085PP001WARFM111
	DRIVE	L1-111-02DDD-WAR/01A	L1-085-01DDD-WAR/01A	L1-WAR07-DDD-01	85.0	111.0	LAM085PP001WARFM111
DAM005M	BOTH	L1-111-02D---WAR/01A	L1-085-01D---WAR/01A	L1-WAR05-D---01	85.0	111.0	LAM085PP001WARFM111
DDAM005M	PUMP	L1-111-02DD--WAR/01A	L1-085-01DD--WAR/01A	L1-WAR06-DD--01	85.0	111.0	LAM085PP001WARFM111
	DRIVE	L1-111-02DDD-WAR/01A	L1-085-01DDD-WAR/01A	L1-WAR07-DDD-01	85.0	111.0	LAM085PP001WARFM111
E005M	BOTH	L1-126-02E---WAR/01A	L1-100-01E---WAR/01A	L1-WAR08-E---01	100.0	126.0	LAM100PP001WARFM126
EE005M	PUMP	L1-153-02EE--WAR/01A	L1-127-01EE--WAR/01A	L1-WAR09-EE--01	127.0	153.0	LAM127PP001WARFM153
	DRIVE	L1-126-02EED-WAR/01A	L1-100-01EED-WAR/01A	L1-WAR10-EED-01	100.0	126.0	LAM100PP001WARFM126
EAM005M	BOTH	L1-126-02E---WAR/01A	L1-100-01E---WAR/01A	L1-WAR08-E---01	100.0	126.0	LAM100PP001WARFM126
EEAM005M	PUMP	L1-153-02EE--WAR/01A	L1-127-01EE--WAR/01A	L1-WAR09-EE--01	127.0	153.0	LAM127PP001WARFM153
	DRIVE	L1-126-02EED-WAR/01A	L1-100-01EED-WAR/01A	L1-WAR10-EED-01	100.0	126.0	LAM100PP001WARFM126
F005M	BOTH	L1-158-02F---WAR/01A	L1-127-01F---WAR/01A	L1-WAR11-F---01	127.0	158.7	LAM127PP001WARFM158
FF005M	PUMP	L1-176-02FF--WAR/01A	L1-152-01FF--WAR/01A	L1-WAR12-FF--01	152.4	176.7	LAM152PP001WARFM176
	DRIVE	L1-176-02FFD-WAR/01A	L1-152-01FFD-WAR/01A	L1-WAR13-FFD-01	152.4	176.7	LAM152PP001WARFM176
FAM005M	PUMP	L1-158-02FAM-WAR/01A	L1-127-01FAM-WAR/01A	L1-WAR14-FAM-01	127.0	158.7	LAM127PP001WARFM158
	DRIVE	L1-158-02F---WAR/01A	L1-127-01F---WAR/01A	L1-WAR11-F---01	127.0	158.7	LAM127PP001WARFM158
FRS005M	PUMP	L1-158-02FRS-WAR/01A	L1-127-01FRS-WAR/01A	L1-WAR15-FRS-01	127.0	158.7	LAM127PP001WARFM158
	DRIVE	L1-158-02F---WAR/01A	L1-127-01F---WAR/01A	L1-WAR11-F---01	127.0	158.7	LAM127PP001WARFM158
FFAM005M	PUMP	L1-176-02FFAMWAR/01A	L1-152-01FFAMWAR/01A	L1-WAR16-FFAM01	152.4	176.7	LAM152PP001WARFM176
	DRIVE	L1-176-02FFD-WAR/01A	L1-152-01FFD-WAR/01A	L1-WAR13-FFD-01	152.4	176.7	LAM152PP001WARFM176
FFRS005AMX	PUMP	L1-176-02FFRSWAR/01A	L1-152-01FFRSWAR/01A	L1-WAR17-FFRS01	152.4	176.7	LAM152PP001WARFM176
	DRIVE	L1-176-02FFD-WAR/01A	L1-152-01FFD-WAR/01A	L1-WAR13-FFD-01	152.4	176.7	LAM152PP001WARFM176
G005M	PUMP	L1-209-02G---WAR/01A	L1-177-01G---WAR/01A	L1-WAR18-G---01	177.8	209.5	LAM177PP001WARFM209
	DRIVE	L1-209-02GD--WAR/01A	L1-177-01GD--WAR/01A	L1-WAR19-GD--01	177.8	209.5	LAM177PP001WARFM209
GAM005M	PUMP	L1-209-02G---WAR/01A	L1-177-01G---WAR/01A	L1-WAR18-G---01	177.8	209.5	LAM177PP001WARFM209
	DRIVE	L1-209-02GD--WAR/01A	L1-177-01GD--WAR/01A	L1-WAR19-GD--01	177.8	209.5	LAM177PP001WARFM209
GAM005M-1	PUMP	L1-209-02GH--WAR/01A	L1-177-01GH--WAR/01A	L1-WAR20-GH--01	177.8	209.5	LAM177PP001WARFM209
	DRIVE	L1-209-02GD--WAR/01A	L1-177-01GD--WAR/01A	L1-WAR19-GD--01	177.8	209.5	LAM177PP001WARFM209
GP005M	PUMP	L1-209-02G---WAR/01A	L1-177-01G---WAR/01A	L1-WAR18-G---01	177.8	209.5	LAM177PP001WARFM209
	DRIVE	L1-209-02GP--WAR/01A	L1-177-01GP--WAR/01A	L1-WAR21-GP--01	177.8	209.5	LAM177PP001WARFM209
GG005-2	PUMP	L1-234-02GG--WAR/01A	L1-203-01GG--WAR/01A	L1-WAR22-GG--01	203.2	234.8	LAM203PP001WARFM234
	DRIVE	L1-222-02GGD-WAR/01A	L1-190-01GGD-WAR/01A	L1-WAR23-GGD-01	190.5	222.2	LAM190PP001WARFM222
HG005	PUMP	L1-260-02HG--WAR/01A	L1-228-01HG--WAR/01A	L1-WAR24-HG--01	228.6	260.3	LAM228PP001WARFM260
	DRIVE	L1-260-02HG--WAR/01A	L1-228-01HG--WAR/01A	L1-WAR24-HG--01	228.6	260.3	LAM228PP001WARFM260
S005M	PUMP	L1-176-02S---WAR/01A	L1-152-01S---WAR/01A	L1-WAR25-S---01	152.4	176.7	LAM152PP001WARFM176
	DRIVE	L1-176-02SD--WAR/01A	L1-152-01SD--WAR/01A	L1-WAR26-SD--01	152.4	176.7	LAM152PP001WARFM176
T005	PUMP	L1-222-02T---WAR/01A	L1-190-01T---WAR/01A	L1-WAR27-T---01	190.5	222.2	LAM190PP001WARFM222
	DRIVE	L1-222-02TD--WAR/01A	L1-190-01TD--WAR/01A	L1-WAR28-TD--01	190.5	222.2	LAM190PP001WARFM222

THIS DOCUMENT IS DESIGNED TO PROVIDE DIMENSIONAL INFORMATION AND AN INDICATION OF AVAILABILITY. FOR FURTHER INFORMATION AND SAFE OPERATING LIMITS CONTACT OUR TECHNICAL SPECIALISTS AT THE LOCATIONS BELOW.



USE DOUBLE MECHANICAL SEALS WITH HAZARDOUS PRODUCTS. ALWAYS TAKE SAFETY PRECAUTIONS:

- GUARD YOUR EQUIPMENT
- WEAR PROTECTIVE CLOTHING



## UK Sales & Technical advice:

AESSEAL plc  
Mill Close  
Templeborough  
Rotherham  
S60 1BZ  
United Kingdom

Telephone: +44 (0) 1709 369966  
Fax: +44 (0) 1709 720788  
E-mail: sales@labtecta.com  
Internet: http://www.labtecta.com

**POLYFLON®**

Handelsgesellschaft m. b. H.

YOUR POINT OF CONTACT FOR SEALING APPLICATIONS!

8020 Graz  
Baumkircherstraße 3  
Tel.: +43(0)316/71 10 89  
Fax: +43(0)316/71 89 55  
www.polyflon.at

2371 Hinterbrühl  
Gadnerstraße 36b

Tel.: +43(0)2236/26 718  
Fax: +43(0)2236/46 811  
office@polyflon.at

## USA Sales & Technical advice:

AESSEAL Inc.  
10231 Cogdill Road  
Suite 105  
Knoxville, TN 37932  
USA

Telephone: +1 865 531 0192  
Fax: +1 865 531 0571  
E-mail: usa@aesseal.com

ALL SIZES ARE SUBJECT TO MANUFACTURING TOLERANCES. WE RESERVE THE RIGHT TO MODIFY SPECIFICATIONS AT ANY TIME.