

4. GROOVED GASKETS

PROPERTIES AND APPLICATION

The grooved gasket are the preferred gaskets when improved performance at low seating stresses is required. It features excellent anti-blow-out properties. A tighter joint is provided with reliable solid metal to metal seal combined with a soft sealing face. Metal gaskets with grooved faces have proven to be very effective for sealing flange connections, and are particularly suitable for applications where high temperatures, pressures and fluctuating conditions are encountered. Non-metal cover layers ensure that flanges are not damaged, even at extreme loads, and provide excellent sealing properties when supported by the grooved metallic gasket. The grooved gasket can be used as an alternative for applications associated with jacketed gaskets (for heat exchangers, vessels and reactors and various flanged connections).

ADVANTAGES

- Capable of sealing pressures exceeding 250 bar.
- Capable of withstanding temperatures up to 700°C.
- Particularly effective in maintaining performance under condition of fluctuating temperatures and pressures.
- Solid construction provides stability even for large diameters and ensures trouble-free handling and installation.
- Gaskets can be fitted to existing assemblies without modification.

SHAPE AND CONSTRUCTION

The grooved gaskets are produced in several types to fit the most demanding applications.

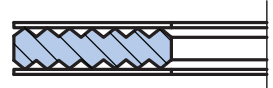
METAL CORE		
Material	ASTM	DIN Material No.
Stainless steel	AISI 321	1.4541
Stainless steel	AISI 316 Ti	1.4571

SIZES

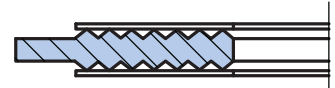
Upon request the grooved gaskets can be manufactured in various shapes and sizes.



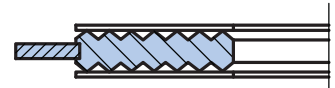
M7A



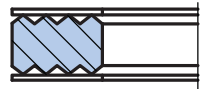
M7B



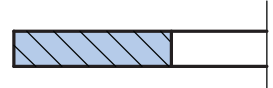
M7C



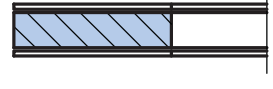
M7D



M10



M10A



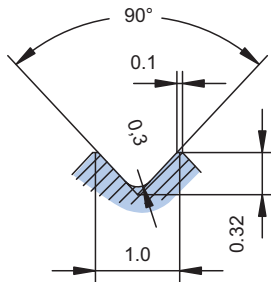
4. GROOVED GASKETS

Grooved gaskets for ASME B16.5 flanges

NPS (in)	d (mm) Class (lb)	D (mm)						
		150	300	400	600	900	1500	2500
1/2"	23.8	44.5	50.8	50.8	50.8	60.4	60.4	66.8
3/4"	31.8	54	63.5	63.5	63.5	66.7	66.7	73.1
1"	36.5	63.5	69.9	69.9	69.9	76.2	76.2	82.5
1 1/4"	46	73	79.4	79.4	79.4	85.8	85.8	101.6
1 1/2"	52.4	82.6	92.1	92.1	92.1	95.3	95.3	114.3
2"	73.2	101.6	108	108	108	139.7	139.7	143
2 1/2"	85.9	120.6	127	127	127	161.9	161.9	165.1
3"	107.8	133.4	146.1	146.1	146.1	165.1	171.5	193.8
4"	131.8	171.5	177.8	174.7	190.5	203.2	206.5	231.9
5"	152.4	193.8	212.8	209.5	238.2	244.6	250.9	276.3
6"	190.5	219.1	247.7	244.5	263.6	285.8	279.4	314.5
8"	238.3	276.3	304.8	301.7	317.5	355.6	349.3	384.3
10"	285.8	336.6	358.8	355.6	396.9	431.8	431.8	473.2
12"	342.9	406.4	419.1	415.9	454.1	495.3	517.6	546.1
14"	374.7	447.7	482.6	479.5	489	517.6	574.7	
16"	425.5	511.2	536.6	533.4	562	571.5	638.2	
18"	489	546.1	593.7	590.6	609.6	635	701.8	
20"	533.4	603.3	650.9	644.5	679.5	695.5	752.5	
24"	641.4	714.4	771.6	765.3	787.4	835.1	898.6	

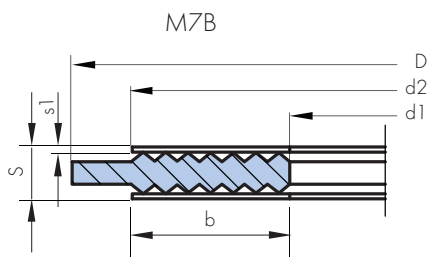
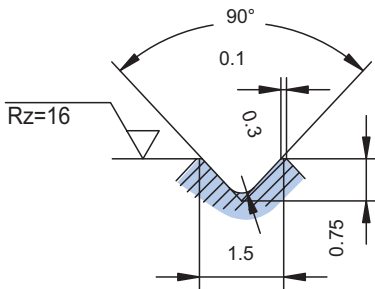
FINE GROOVE PROFIL

S1=0.5mm



STANDARD GROOVE PROFIL

S1= 1mm



PROFILE	s1 (mm)
standard	1.0
fine	0.5

EN 1514-6 grooved gaskets for EN 1092-1 flanges

DN (mm)	d1 (mm) PN Class	d2 (mm)			d3 (mm)							
		PN 10-40	PN 63-160	PN 250-400	PN 10	PN 16	PN 25	PN 40	PN 63	PN 100	PN 160	PN 250
10	22	36	36	36	46	46	46	46	56	56	56	67
15	26	42	42	42	51	51	51	51	61	61	61	72
20	31	47	47	47	61	61	61	61				
25	36	52	52	52	71	71	71	71	82	82	82	83
32	46	62	62	66	82	82	82	82				
40	53	69	69	73	92	92	92	92	103	103	103	109
50	65	81	81	87	107	107	107	107	113	119	119	124
65	81	100	100	103	127	127	127	127	137	143	143	153
80	95	115	115	121	142	142	142	142	148	154	154	170
100	118	138	138	146	162	162	168	168	174	180	180	202
125	142	162	162	178	192	192	194	194	210	217	217	242
150	170	190	190	212	217	217	224	224	247	257	257	284
175	195	215	215	245	247	247	254	265	277	287	284	316
200	220	240	248	280	272	272	284	290	309	324	324	358
250	270	290	300	340	327	328	340	352	364	391	388	442
300	320	340	356	400	377	383	400	417	424	458	458	
350	375	395	415		437	443	457	474	486	512		
400	426	450	474		489	495	514	546	543	572		
450	480	506			539	555		571				
500	530	560	588		594	617	624	628	657	704		
600	630	664	700		695	734	731	747	764	813		
700	730	770	812		810	804	833	852	879	950		
800	830	876	886		917	911	942	974	988			
900	930	982	994		1017	1011	1042	1084	1108			
1000	1040	1098	1110		1124	1128	1154	1194	1220			
1200	1250	1320	1334		1341	1342	1364	1398	1452			

GASKET ORDERING EXAMPLE

Grooved gasket M7A,
EN 1514-6, DN 80, PN 40,
1.4541/Graphite